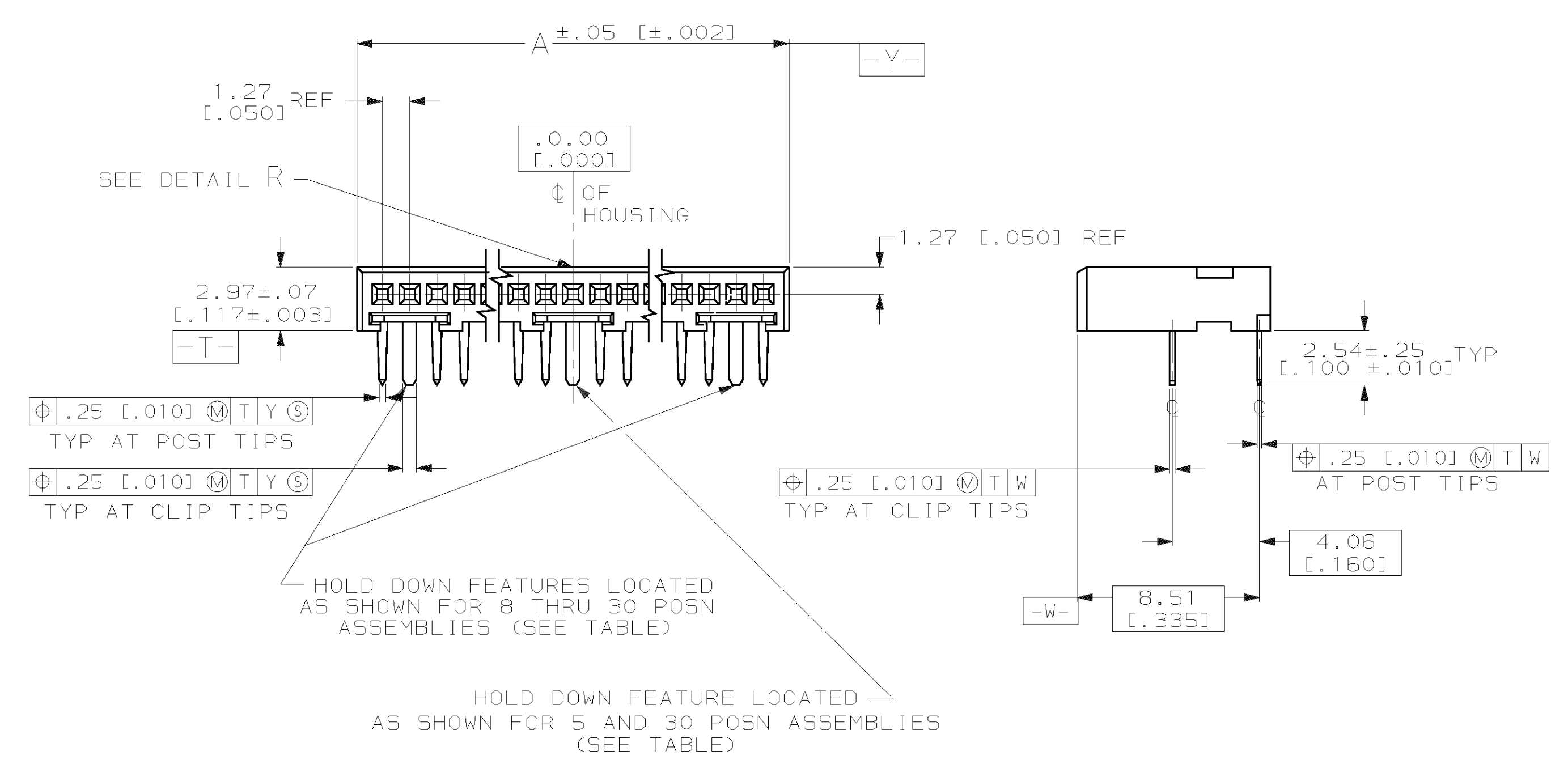
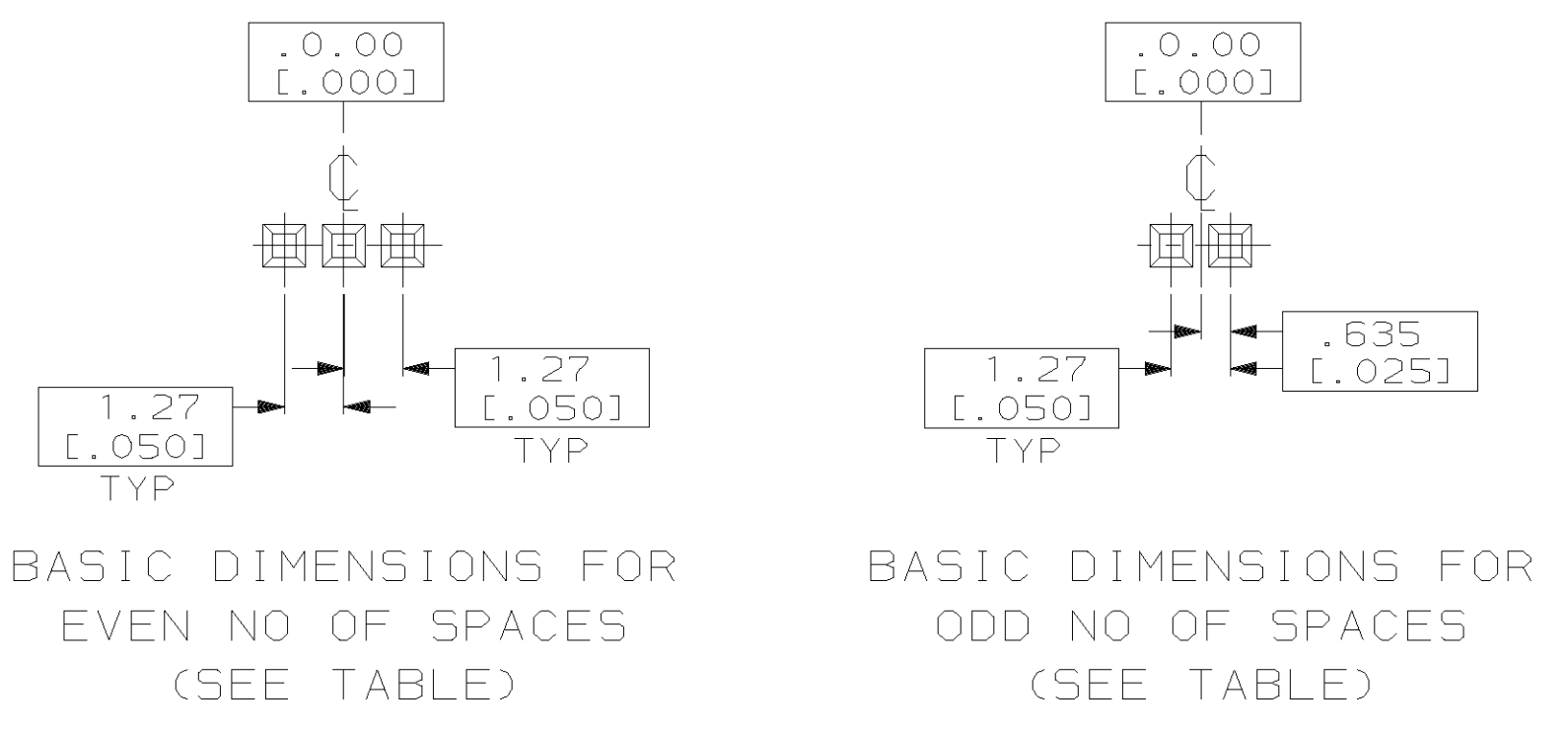
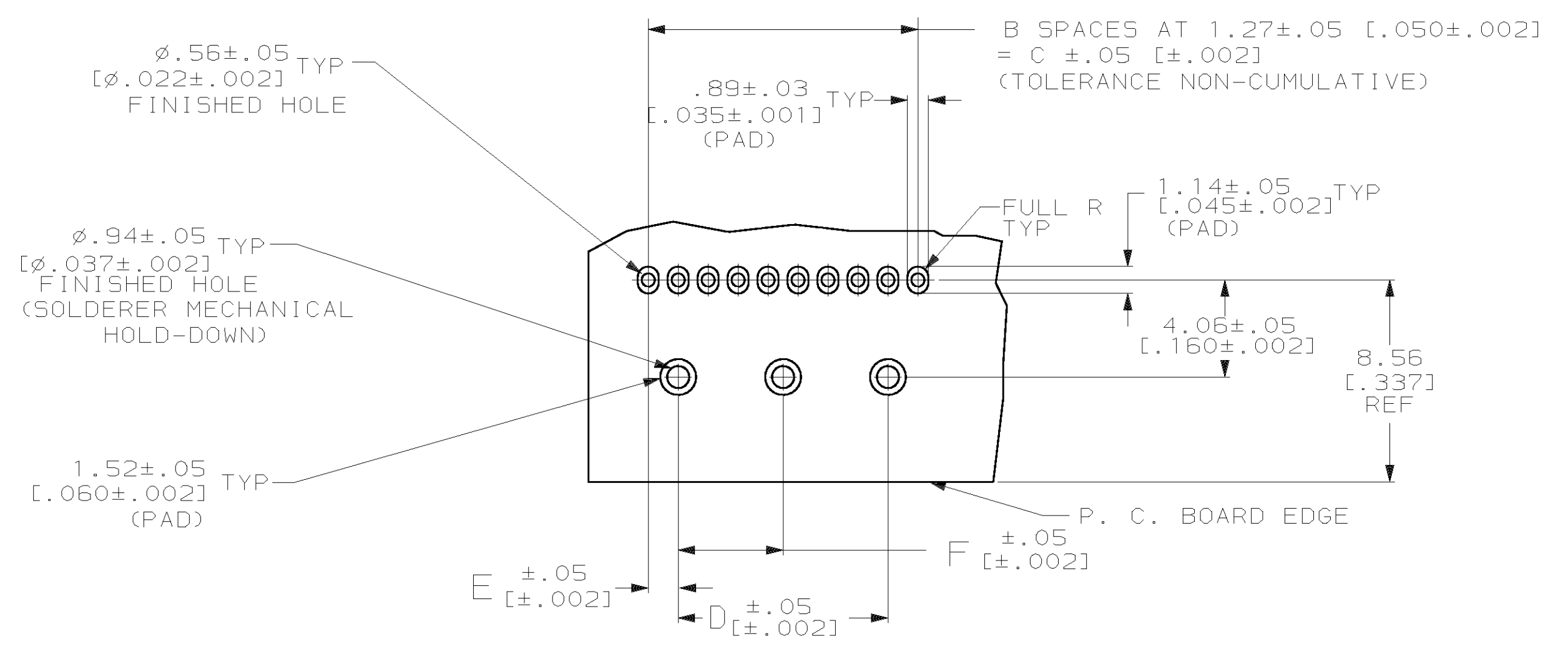


- ① CONTACT AREA PLATED WITH .000762 [.000030] GOLD; SOLDER TAILS PLATED WITH .000381 [.000150] TIN-LEAD; ALL OVER .001270 [.000050] NICKEL
- ② POINT OF MEASUREMENT FOR GOLD THICKNESS IS .76 [.030] FROM MATING END OF CONTACT
- ③ CONTACT AREA PLATED WITH .000762 [.000030] GOLD; SOLDER TAILS PLATED WITH .000381 [.000150] TIN; ALL OVER .001270 [.000050] NICKEL



		2.54 [.100]		5.08 [.200]	4	7.47 [.294]	5	5-104196-8	
③		17.15 [.675]	1.27 [.050]	34.29 [.1350]	36.83 [.1450]	29	39.22 [.1544]	30	5-104196-7
		1.27 [.050]	27.94 [.1100]	30.48 [.1200]	24	32.87 [.1294]	25	5-104196-6	
③		1.27 [.050]	21.59 [.850]	24.13 [.950]	19	26.52 [.1044]	20	5-104196-5	
		1.27 [.050]	15.24 [.600]	17.78 [.700]	14	20.17 [.794]	15	5-104196-4	
③		1.27 [.050]	11.43 [.450]	13.97 [.550]	11	16.36 [.644]	12	5-104196-3	
		1.27 [.050]	8.89 [.350]	11.43 [.450]	9	13.82 [.544]	10	5-104196-2	
③		-	-	-	-	-	-	5-104196-1	
OBSOLETE	①	2.54 [.100]		5.08 [.200]	4	7.47 [.294]	5	104196-8	
OBSOLETE	①	17.15 [.675]	1.27 [.050]	34.29 [.1350]	36.83 [.1450]	29	39.22 [.1544]	30	104196-7
OBSOLETE	①	1.27 [.050]	27.94 [.1100]	30.48 [.1200]	24	32.87 [.1294]	25	104196-6	
	①	1.27 [.050]	21.59 [.850]	24.13 [.950]	19	26.52 [.1044]	20	104196-5	
	①	1.27 [.050]	15.24 [.600]	17.78 [.700]	14	20.17 [.794]	15	104196-4	
OBSOLETE	①	1.27 [.050]	11.43 [.450]	13.97 [.550]	11	16.36 [.644]	12	104196-3	
	①	1.27 [.050]	8.89 [.350]	11.43 [.450]	9	13.82 [.544]	10	104196-2	
OBSOLETE	①	-	-	-	-	-	-	104196-1	
		F	E	D	C	B	A	NO OF POSN	PART NUMBER



RECOMMENDED HOLE PATTERN

DETAIL R

THIS DRAWING IS A CONTROLLED DOCUMENT.

D. D. CLOUSER 10-3-88  
 T. ZOLA 10-3-88  
 G. SNYDER 10-3-88

AMP Incorporated  
 Harrisburg, PA 17105-3608

RECEPTACLE ASSEMBLY, RIGHT ANGLE, SINGLE ROW, AMPMODU® SYSTEM 50

114-25031

000779-104196

CUSTOMER DRAWING

SCALE 5:1 SHEET 1 OF 1 REV J